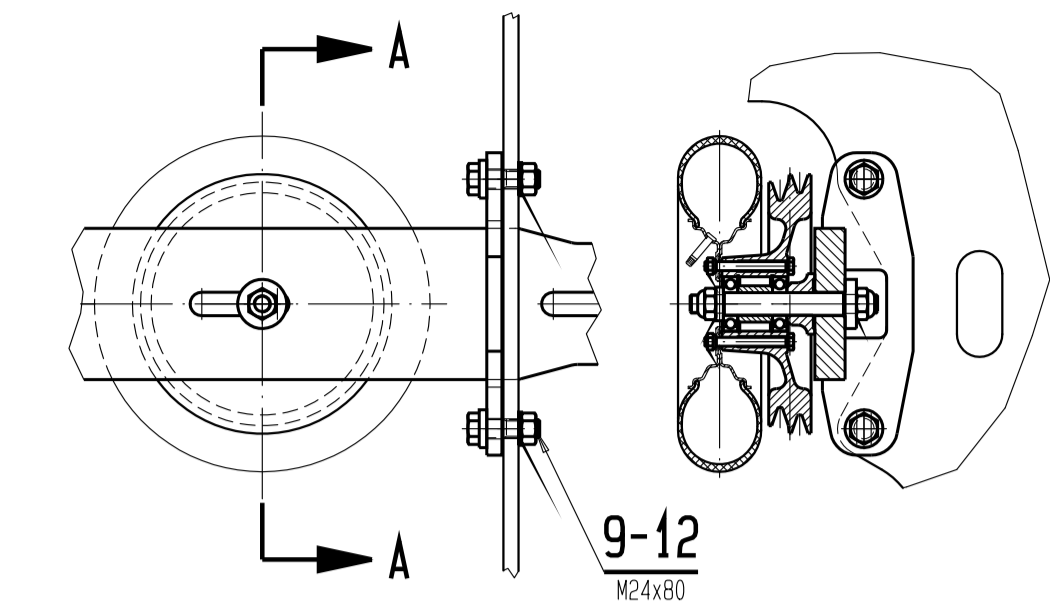
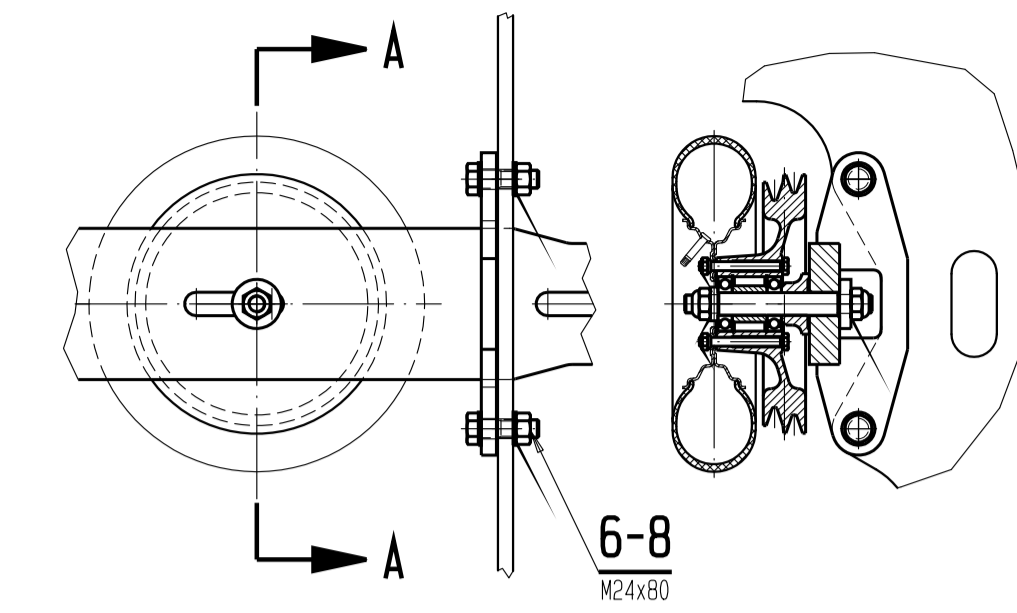
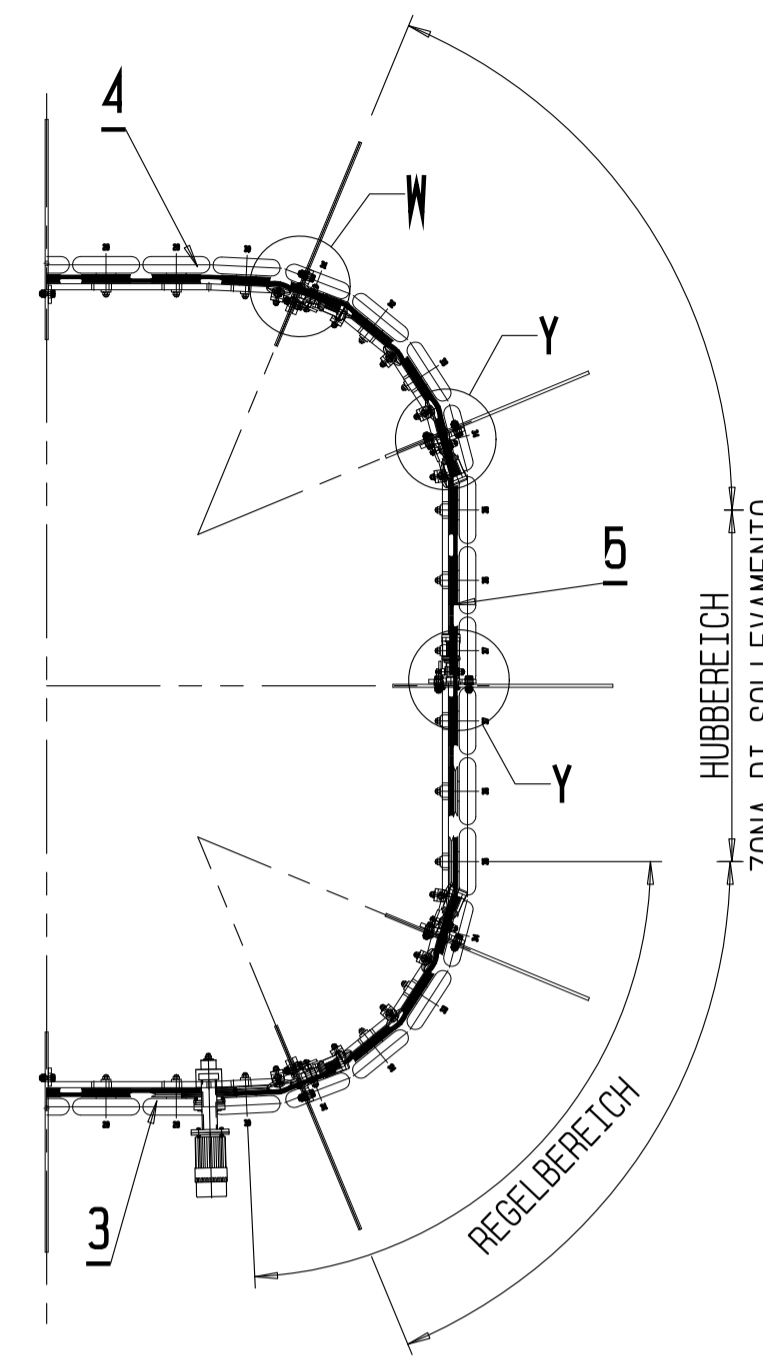
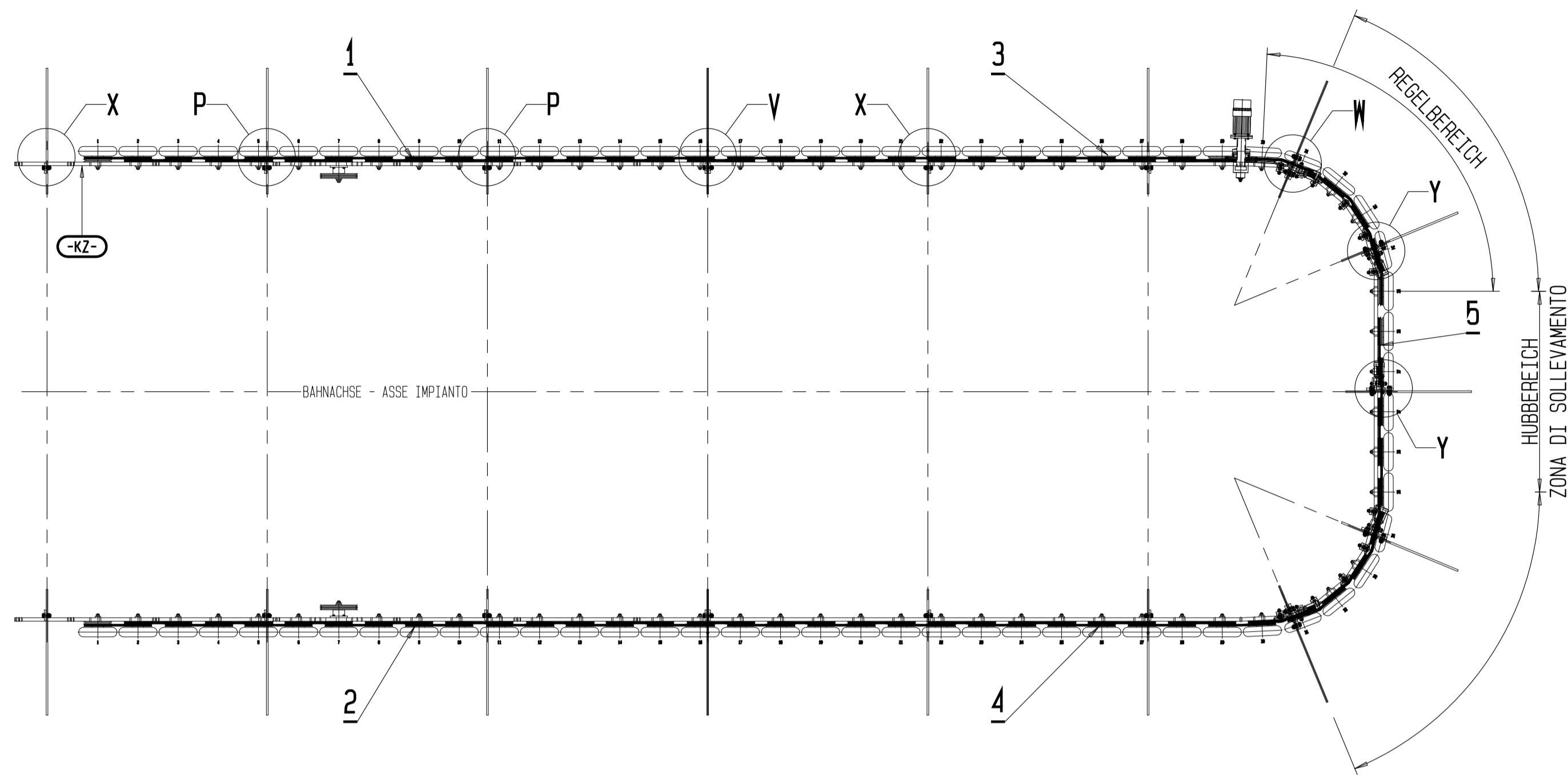


Hubvorrichtung Bogen SOC Feinregulierung rechts SPD
 Sollevamento Curva SOC Spaziatore destro SPD

Hubvorrichtung Bogen SOC Feinregulierung links SPS
 Sollevamento Curva SOC Spaziatore sinistro SPS

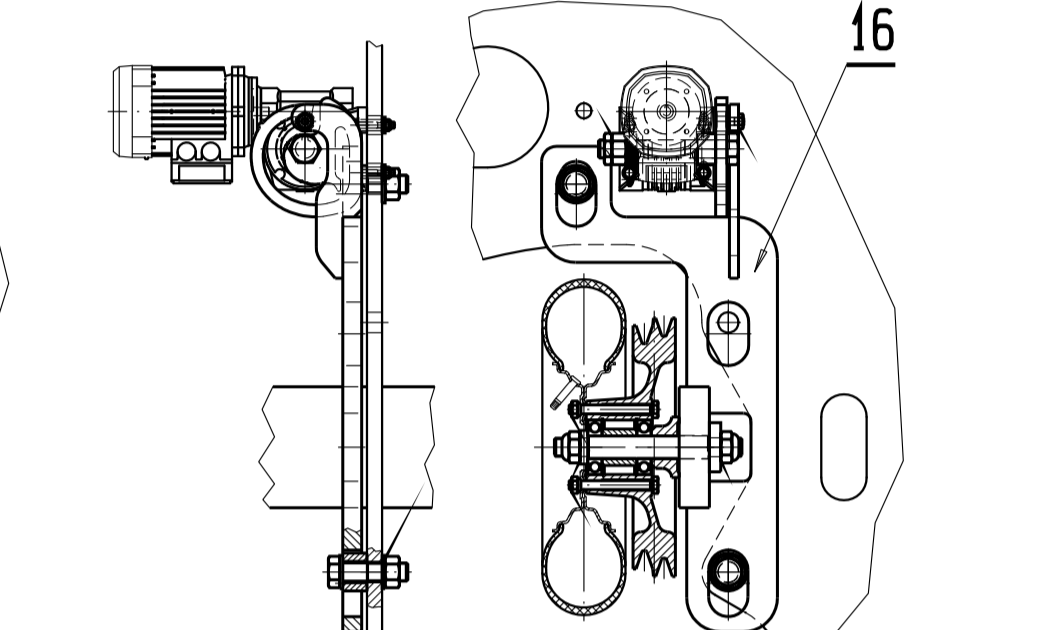
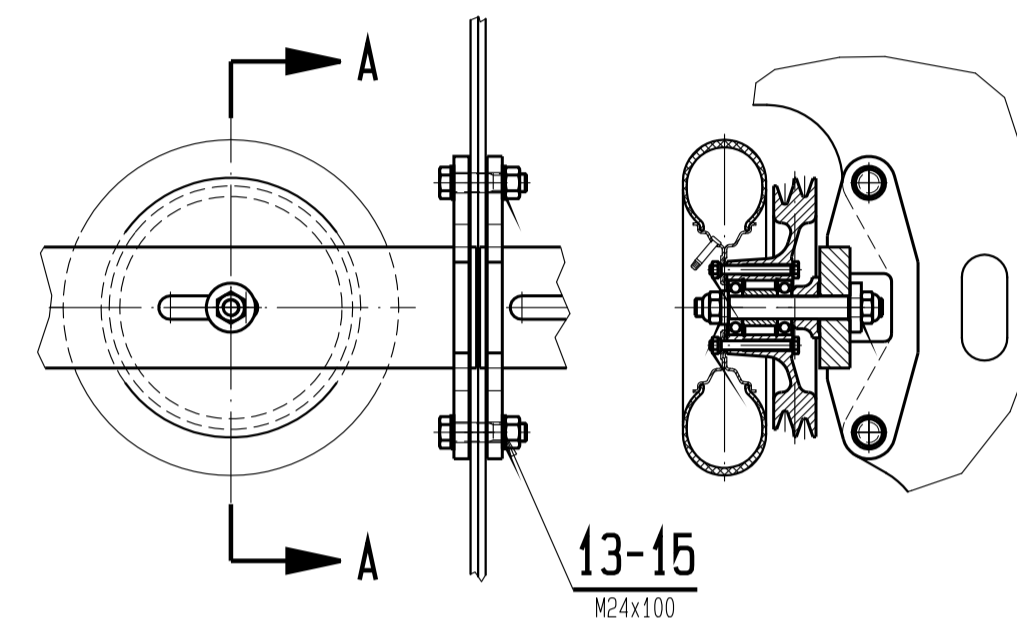
DETAIL/PARTICOLARE X
 MABSTAB/SCALA 1:10

DETAIL/PARTICOLARE P
 MABSTAB/SCALA 1:10



DETAIL/PARTICOLARE V
 MABSTAB/SCALA 1:10

DETAIL/PARTICOLARE Y
 MABSTAB/SCALA 1:10

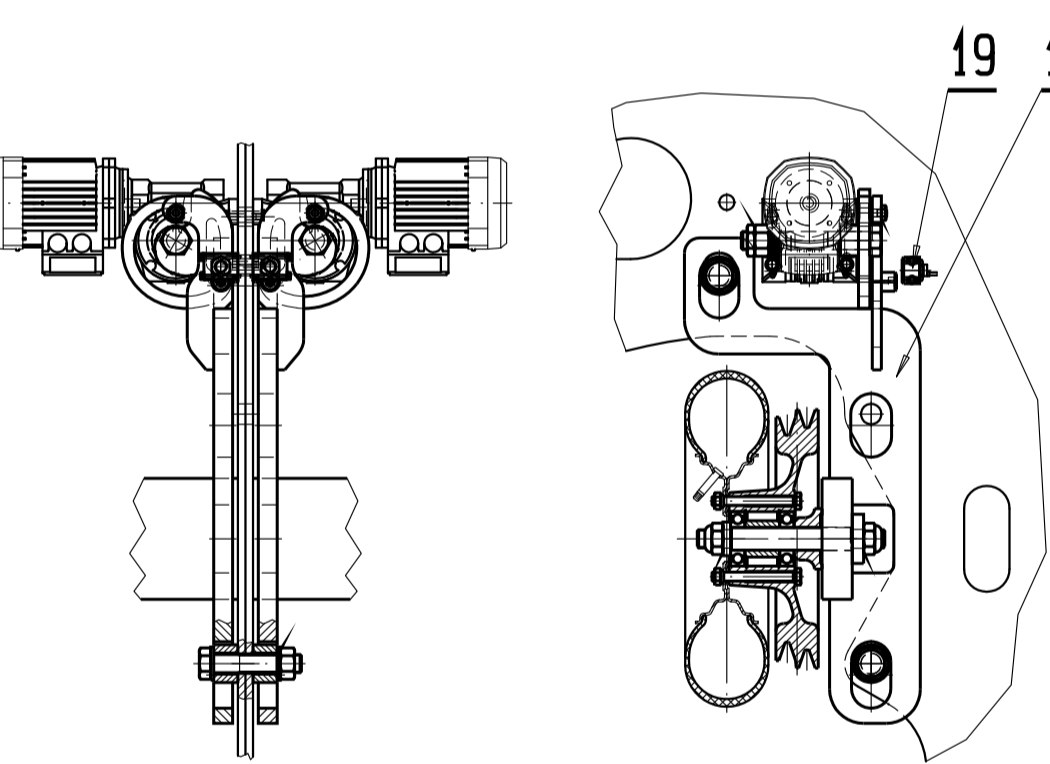
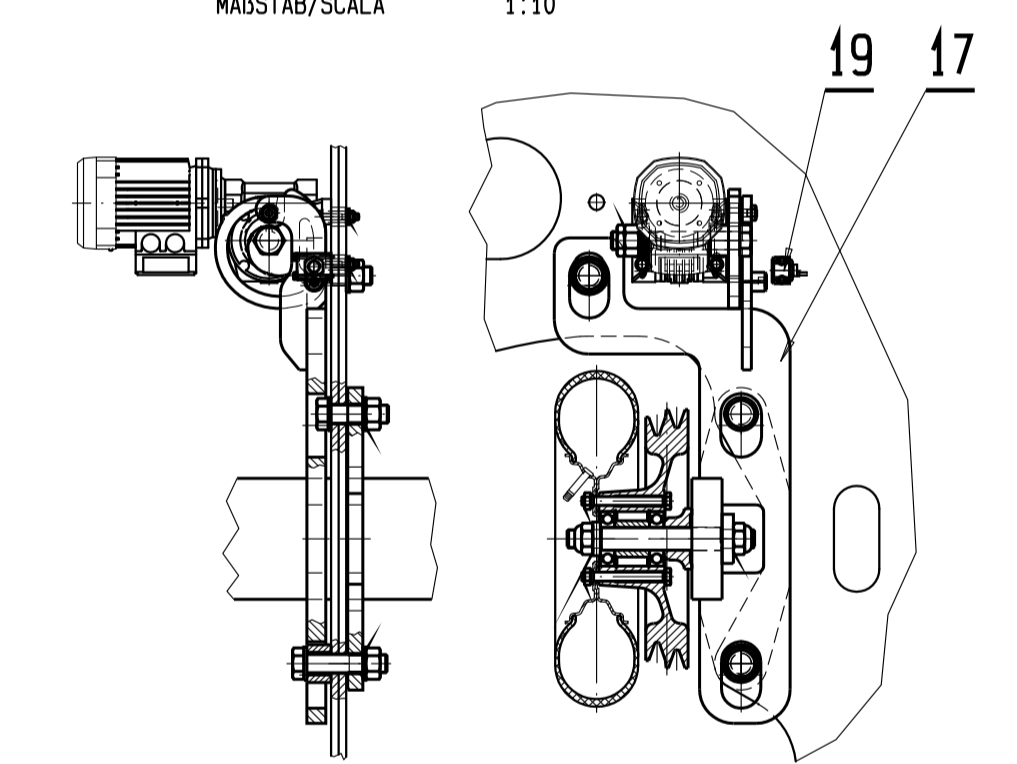
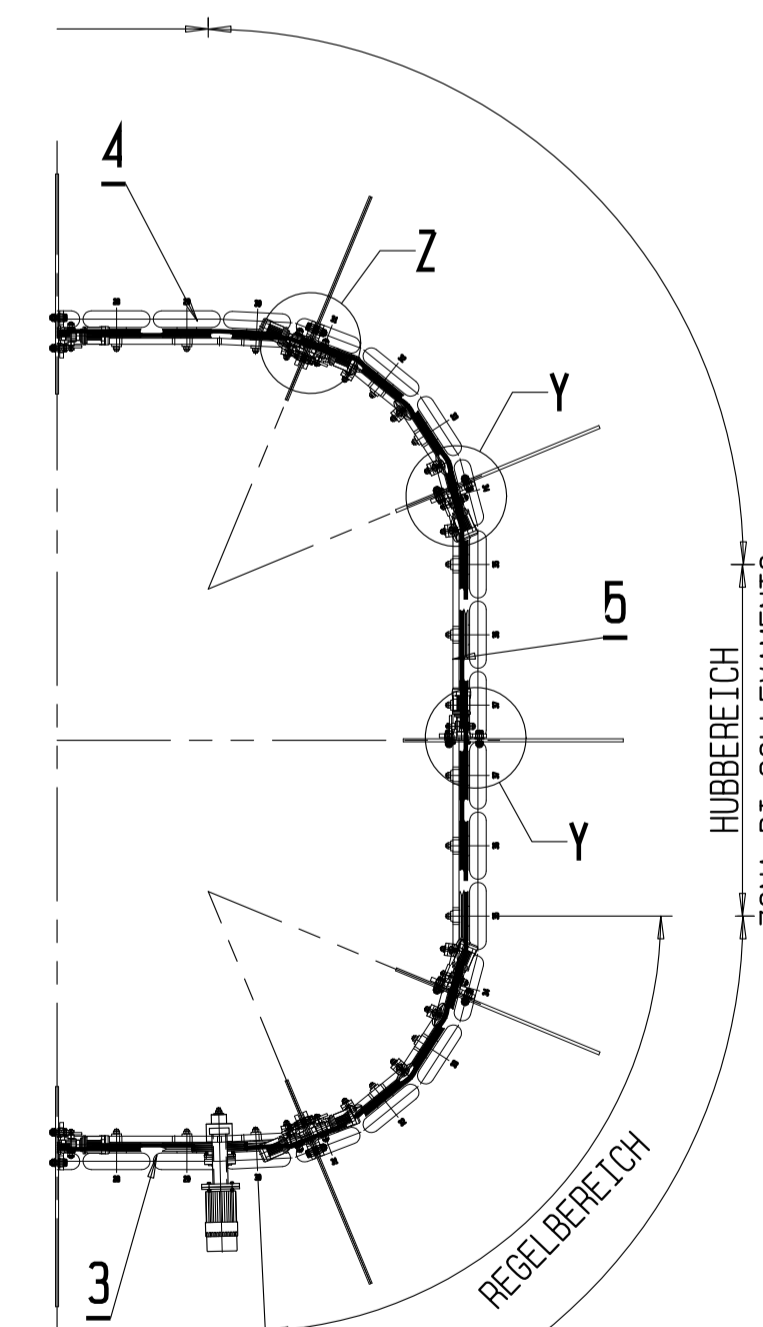
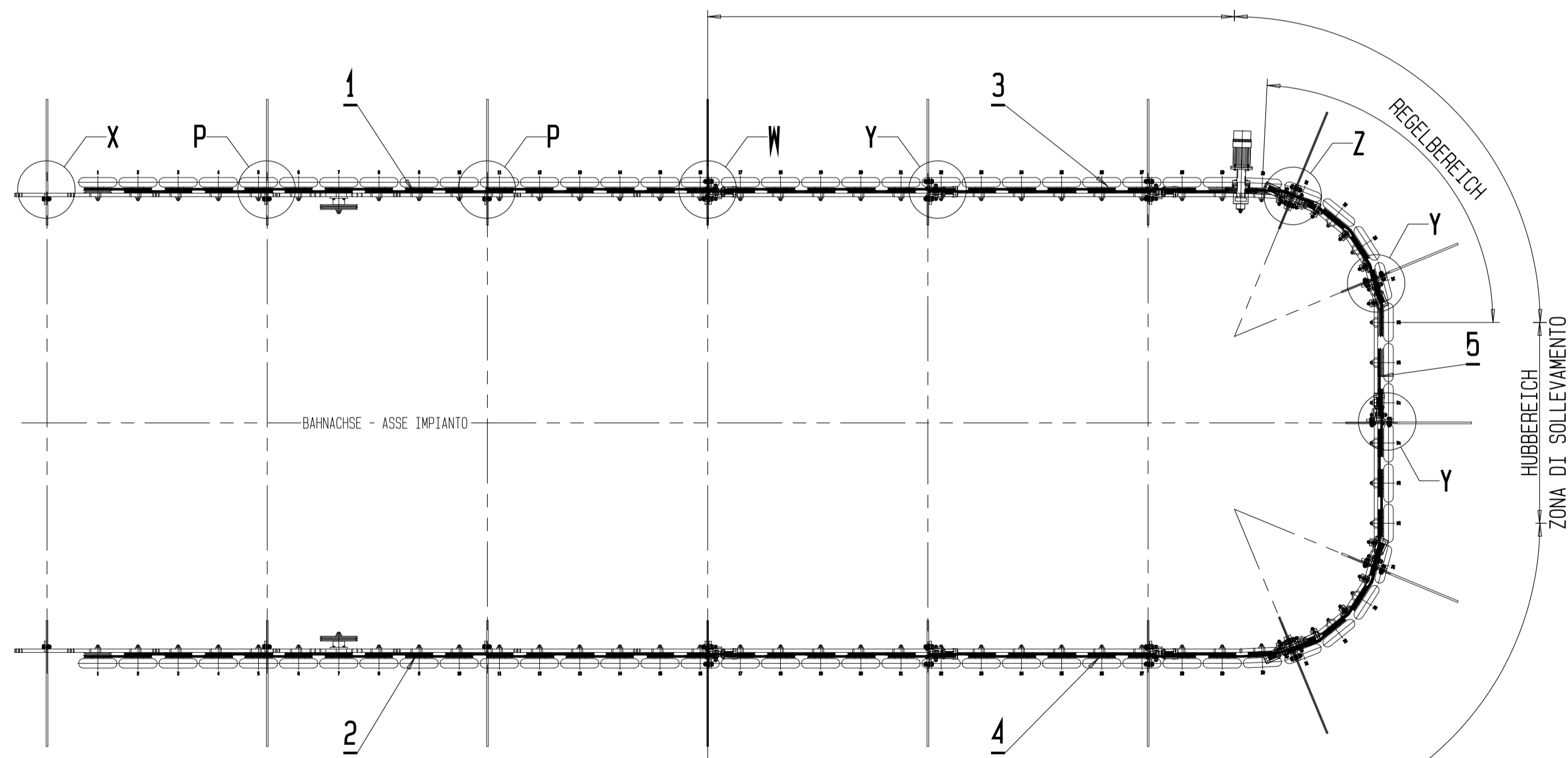


Hubvorrichtung Gerade+Bogen SOL Feinregulierung rechts SPD
 Sollevamento Logitud.+Curva SOL Spaziatore destro SPD

Hubvorrichtung Gerade+Bogen SOL Feinregulierung links SPS
 Sollevamento Logitud.+Curva SOL Spaziatore sinistro SPS

DETAIL/PARTICOLARE W
 MABSTAB/SCALA 1:10

DETAIL/PARTICOLARE Z
 MABSTAB/SCALA 1:10



Anziehemente Momenti di serraggio		
Schrauben Metriche Gewinde ISO	Vite Filettatura metrica ISO	
Materiali	8.8	10.9
M10	48 Nm	67 Nm
M12	83 Nm	117 Nm
M16	200 Nm	285 Nm
M20	390 Nm	550 Nm
M22	530 Nm	745 Nm
M24	675 Nm	950 Nm
M27	995 Nm	1400 Nm
M30	1350 Nm	1900 Nm
M36	2360 Nm	3310 Nm

Feinregulierung links Spaziatore sinistro	SPS
Feinregulierung rechts Spaziatore destro	SPD
Hubvorrichtung Gerade+Bogen Sollevamento Logitud.+Curva	SOL
Hubvorrichtung Bogen Sollevamento Curva	SOC
Reifenförderer Linksbahn Convogliatore Imp.sinistro	LI
Reifenförderer Rechtsbahn Convogliatore Imp.destro	DX

LI + SOL + SPS	80080317
SX + SOL + SPS	80080316
RE + SOL + SPS	80080315
DX + SOL + SPS	80080314
LI + SOL + SPD	80080313
SX + SOL + SPD	80080312
RE + SOL + SPD	80080311
DX + SOL + SPD	80080310

Indice	Modifica	Data	Nome	Esecuzione	Ident. no.
Doppelmayr Italia srl Zona Industriale 14 I-39011 LANA (BZ)					dis. 2006-02-21 contr.
SB					Scala 1/50 dis. 2006-02-21 contr.
Impianto					Fattore: 1.000 peso grezzo kg
Ordine					Nota di stampa 2006-07-18 TECNOLOGIE
CONVOGLIATORE 4CLD-05 FISSAGGIO CONVOGLIATORE 4CLD-05					Disegno d'origine 14187NIE001701 Disegno no. 15957NIE001701